



COMMONWEALTH OF KENTUCKY  
TRANSPORTATION CABINET

Frankfort, Kentucky 40622  
www.transportation.ky.gov/

Matthew G. Bevin  
Governor

Greg Thomas  
Secretary

July 23, 2019

CALL NO. 203  
CONTRACT ID NO. 195121  
ADDENDUM # 2

Subject: VARIOUS COUNTIES, 121GR19D121 - STP BRZ  
Letting July 26, 2019

- (1) Revised - Project Area Plan - Page 67 of 357
- (2) Revised - Material Summary - Pages 298-306 of 357
- (3) Revised - Proposal Bid Items - Pages 351-357 of 357

Proposal revisions are available at <http://transportation.ky.gov/Construction-Procurement/>.

If you have any questions, please contact us at 502-564-3500.

Sincerely,

A handwritten signature in cursive script that reads "Rachel Mills".

Rachel Mills, P.E.  
Director  
Division of Construction Procurement

RM:mr  
Enclosures



An Equal Opportunity Employer M/F/D

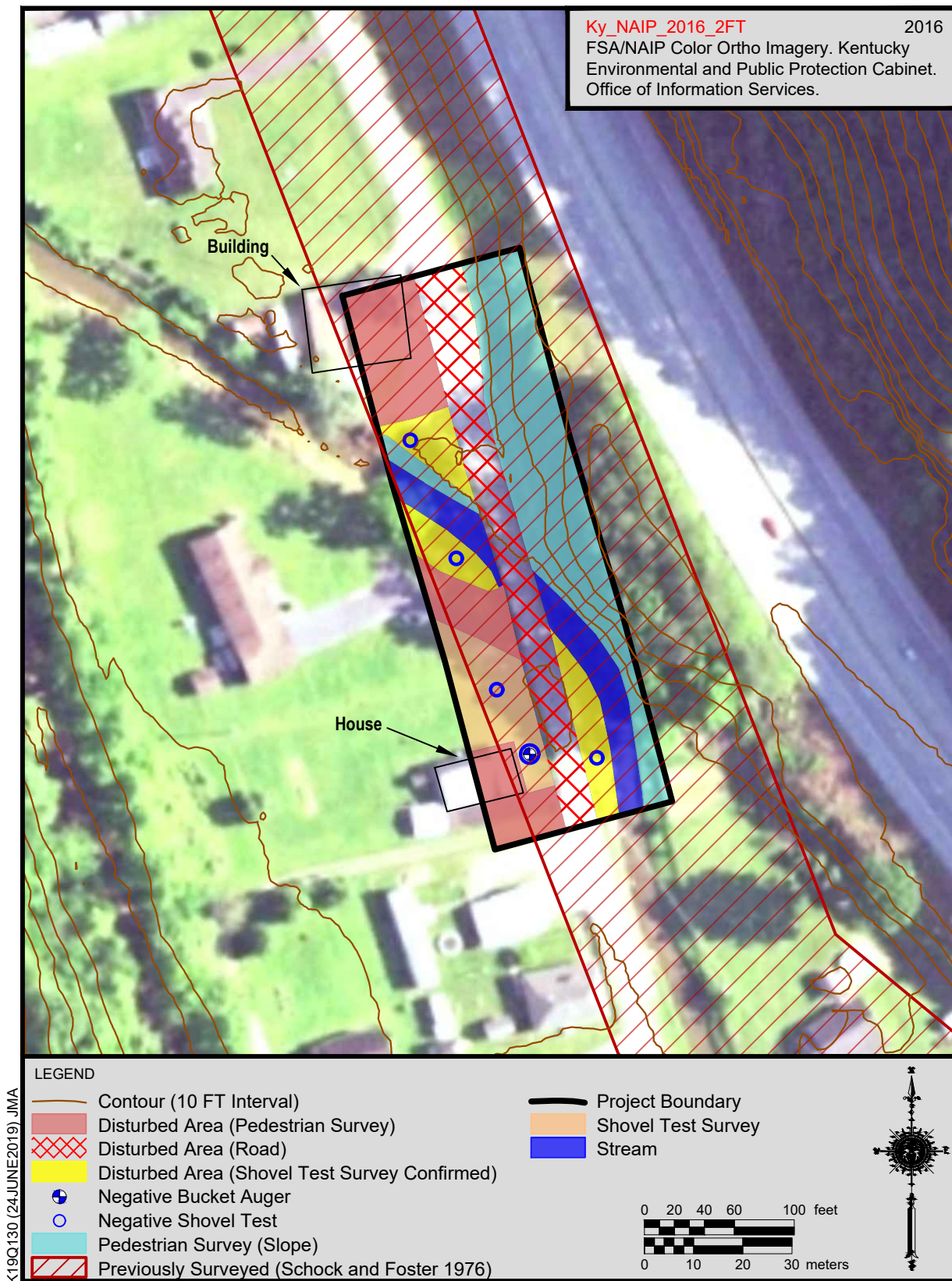


Figure 6. Project area plan for the CR 1911 bridge over Caney Creek (098C00113N; Item No. 12-10026.00; Pike County).

# MATERIAL SUMMARY

**CONTRACT ID: 195121**

**121GR19D121 - STP BRZ**

**BR01318121901**

KY 1812 ADDRESS DEFICIENCIES OF KY 1812 BRIDGE OVER JOHNSON FORK (013B00007N), FROM MP 14.28 TO MP 14.286. BRIDGE REPLACEMENT, A DISTANCE OF .01 MILES.

Project Line No	Bid Code	DESCRIPTION	Quantity	Unit
1080	01987	DELINEATOR FOR GUARDRAIL BI DIRECTIONAL WHITE	8.00	EACH
1085	02223	GRANULAR EMBANKMENT	28.00	CUYD
1090	02351	GUARDRAIL-STEEL W BEAM-S FACE	100.00	LF
1095	02360	GUARDRAIL TERMINAL SECTION NO 1	1.00	EACH
1100	02371	GUARDRAIL END TREATMENT TYPE 7	3.00	EACH
1105	02399	EXTRA LENGTH GUARDRAIL POST	28.00	EACH
1110	02545	CLEARING AND GRUBBING - Less than 1 acre	1.00	LS
1115	02650	MAINTAIN & CONTROL TRAFFIC	1.00	LS
1120	02671	PORTABLE CHANGEABLE MESSAGE SIGN	2.00	EACH
1125	02726	STAKING	1.00	LS
1130	02731	REMOVE STRUCTURE	1.00	LS
1135	03299	ARMORED EDGE FOR CONCRETE	55.40	LF
1140	03304	BRIDGE OVERLAY APPROACH PAVEMENT	173.00	SQYD
1145	08002	STRUCTURE EXCAV-SOLID ROCK	33.00	CUYD
1150	08003	FOUNDATION PREPARATION	1.00	LS
1155	08019	CYCLOPEAN STONE RIP RAP	136.00	TON
1160	08033	TEST PILES	43.00	LF
1165	08039	PRE-DRILLING FOR PILES	150.00	LF
1170	08046	PILES-STEEL HP12X53	279.50	LF
1175	08094	PILE POINTS-12 IN	15.00	EACH
1180	08100	CONCRETE-CLASS A	177.40	CUYD
1185	08104	CONCRETE-CLASS AA	12.70	CUYD
1190	08151	STEEL REINFORCEMENT-EPOXY COATED	13,475.00	LB
1195	08661	PRECAST PC BOX BEAM CB12-48	201.00	LF
1200	21415ND	EROSION CONTROL	1.00	LS
1205	23378EC	CONCRETE SEALING	804.00	SQFT
1210	24982EC	CONCRETE COATING - Approx. 1489 SF	1.00	LS
1215	02568	MOBILIZATION	1.00	LS
1220	02569	DEMOBILIZATION	1.00	LS
1225	25017ED	RAIL SYSTEM SIDE MOUNTED MGS - (ADDED: 7-23-19)	61.00	LF

# MATERIAL SUMMARY

**CONTRACT ID: 195121**

**121GR19D121 - STP BRZ**

**BR06011301901**

COLLINS BRANCH ROAD (CR 1130) ADDRESS DEFICIENCIES OF COLLINS BRANCH RD BRIDGE OVER CARR FORK (060C00029N), FROM MP .015 TO MP .021. BRIDGE REPLACEMENT, A DISTANCE OF .01 MILES.

Project Line No	Bid Code	DESCRIPTION	Quantity	Unit
0005	00301	CL2 ASPH SURF 0.38D PG64-22	22.00	TON
0010	00212	CL2 ASPH BASE 1.00D PG64-22	133.00	TON
0015	02726	STAKING	1.00	LS
0020	02268	REMOVE & REPLACE FENCE	40.00	LF
0025	02678	SCARIFYING PAVEMENT	122.00	SQYD
0030	02545	CLEARING AND GRUBBING - Less than 1 Acre	1.00	LS
0035	02671	PORTABLE CHANGEABLE MESSAGE SIGN	2.00	EACH
0040	02731	REMOVE STRUCTURE	1.00	LS
0045	02650	MAINTAIN & CONTROL TRAFFIC	1.00	LS
0050	21415ND	EROSION CONTROL	1.00	LS
0055	01987	DELINEATOR FOR GUARDRAIL BI DIRECTIONAL WHITE	10.00	EACH
0060	02367	GUARDRAIL END TREATMENT TYPE 1	1.00	EACH
0065	06514	PAVE STRIPING-PERM PAINT-4 IN	150.00	LF
0070	08033	TEST PILES	60.00	LF
0075	02371	GUARDRAIL END TREATMENT TYPE 7	1.00	EACH
0080	00001	DGA BASE	249.00	TON
0085	02355	GUARDRAIL-STEEL W BEAM-S FACE A	100.00	LF
0090	08151	STEEL REINFORCEMENT-EPOXY COATED - (REVISED: 7-12-19)	1,706.00	LB
0095	08150	STEEL REINFORCEMENT	6,500.00	LB
0100	02399	EXTRA LENGTH GUARDRAIL POST	28.00	EACH
0105	02351	GUARDRAIL-STEEL W BEAM-S FACE	100.00	LF
0110	02360	GUARDRAIL TERMINAL SECTION NO 1	2.00	EACH
0115	08661	PRECAST PC BOX BEAM CB12-48	136.00	LF
0120	08046	PILES-STEEL HP12X53	300.00	LF
0125	08094	PILE POINTS-12 IN	14.00	EACH
0130	08801	GUARDRAIL-STEEL W BEAM-S FACE BR	58.00	LF
0135	08003	FOUNDATION PREPARATION	1.00	LS
0140	08019	CYCLOPEAN STONE RIP RAP	90.00	TON
0145	08104	CONCRETE-CLASS AA	16.00	CUYD
0150	08100	CONCRETE-CLASS A	110.00	CUYD
0155	23378EC	CONCRETE SEALING	550.00	SQFT
0160	24982EC	CONCRETE COATING - Approx 1400 SF.	1.00	LS
0165	03299	ARMORED EDGE FOR CONCRETE - 1 - PRECAST CONCRETE SPAN	34.00	LF
0170	02568	MOBILIZATION	1.00	LS
0175	02569	DEMOBILIZATION	1.00	LS

# MATERIAL SUMMARY

**CONTRACT ID: 195121**

**121GR19D121 - STP BRZ**

**BR06703431900**

KY 343 OVER WRIGHT FORK ADDRESS DEFICIENCIES OF KY-343 BRIDGE OVER WRIGHT FORK (067B00078N), FROM MP .44 TO MP .48. BRIDGE REPLACEMENT, A DISTANCE OF .04 MILES.

Project Line No	Bid Code	DESCRIPTION	Quantity	Unit
0325	01691	FLUME INLET TYPE 2	1.00	EACH
0330	01811	STANDARD CURB AND GUTTER MOD	69.00	LF
0335	01891	ISLAND HEADER CURB TYPE 2	50.00	LF
0340	01987	DELINEATOR FOR GUARDRAIL BI DIRECTIONAL WHITE	10.00	EACH
0345	02223	GRANULAR EMBANKMENT	70.00	CUYD
0350	02351	GUARDRAIL-STEEL W BEAM-S FACE	162.50	LF
0355	02360	GUARDRAIL TERMINAL SECTION NO 1	2.00	EACH
0360	02363	GUARDRAIL CONNECTOR TO BRIDGE END TY A	2.00	EACH
0365	02371	GUARDRAIL END TREATMENT TYPE 7	1.00	EACH
0370	02378	GUARDRAIL CONNECTOR TO BRIDGE END TY D	2.00	EACH
0375	02391	GUARDRAIL END TREATMENT TYPE 4A	1.00	EACH
0380	02399	EXTRA LENGTH GUARDRAIL POST	32.00	EACH
0385	02545	CLEARING AND GRUBBING - Less than 1 acre	1.00	LS
0390	02619	HANDRAIL-TYPE A	44.00	LF
0395	02650	MAINTAIN & CONTROL TRAFFIC	1.00	LS
0400	02671	PORTABLE CHANGEABLE MESSAGE SIGN	4.00	EACH
0405	02720	SIDEWALK-4 IN CONCRETE	26.00	SQYD
0410	02726	STAKING	1.00	LS
0415	02731	REMOVE STRUCTURE	1.00	LS
0420	03299	ARMORED EDGE FOR CONCRETE	92.00	LF
0425	03304	BRIDGE OVERLAY APPROACH PAVEMENT	740.00	SQYD
0430	08003	FOUNDATION PREPARATION	1.00	LS
0435	08019	CYCLOPEAN STONE RIP RAP	320.00	TON
0440	08033	TEST PILES	50.00	LF
0445	08046	PILES-STEEL HP12X53	312.00	LF
0450	08094	PILE POINTS-12 IN	17.00	EACH
0455	08100	CONCRETE-CLASS A	50.00	CUYD
0460	08104	CONCRETE-CLASS AA	102.00	CUYD
0465	08140	MECHANICAL REINF COUPLER #5 EPOXY COATED	140.00	EACH
0470	08151	STEEL REINFORCEMENT-EPOXY COATED	37,500.00	LB
0475	21415ND	EROSION CONTROL	1.00	LS
0480	21532ED	RAIL SYSTEM TYPE III	40.00	LF
0485	23158ES505	DETECTABLE WARNINGS	8.00	SQFT
0490	23813EC	DECK DRAIN	2.00	EACH
0495	24405EC	MECHANICAL REINF COUPLER-#8 EPOXY COATED	20.00	EACH
0500	24684EN	RAIL SYSTEM TYPE 4	44.00	LF
0505	24982EC	CONCRETE COATING - Approx 2650 SF	1.00	LS
0510	02568	MOBILIZATION	1.00	LS
0515	02569	DEMOBILIZATION	1.00	LS
0520	23378EC	CONCRETE SEALING	1,265.00	SQFT

# MATERIAL SUMMARY

**CONTRACT ID: 195121**

**121GR19D121 - STP BRZ**

**BR06708051900**

KY-805 ADDRESS DEFICIENCIES OF KY-805 BRIDGE OVER POTTERS FORK (067B00022N), FROM MP 2.989 TO MP 2.997. BRIDGE SUPERSTRUCTURE REHAB, A DISTANCE OF .08 MILES.

Project Line No	Bid Code	DESCRIPTION	Quantity	Unit
0955	00001	DGA BASE	145.00	TON
0960	00212	CL2 ASPH BASE 1.00D PG64-22	94.00	TON
0965	02223	GRANULAR EMBANKMENT	28.00	CUYD
0970	02355	GUARDRAIL-STEEL W BEAM-S FACE A	131.25	LF
0975	02360	GUARDRAIL TERMINAL SECTION NO 1	4.00	EACH
0980	02399	EXTRA LENGTH GUARDRAIL POST	21.00	EACH
0985	02650	MAINTAIN & CONTROL TRAFFIC	1.00	LS
0990	02651	DIVERSIONS (BY-PASS DETOURS)	1.00	LS
0995	03299	ARMORED EDGE FOR CONCRETE	63.00	LF
1000	03304	BRIDGE OVERLAY APPROACH PAVEMENT	125.00	SQYD
1005	08003	FOUNDATION PREPARATION	1.00	LS
1010	08100	CONCRETE-CLASS A	7.50	CUYD
1015	08104	CONCRETE-CLASS AA	16.50	CUYD
1020	08150	STEEL REINFORCEMENT - (REVISED: 7-12-19)	1,548.00	LB
1025	08151	STEEL REINFORCEMENT-EPOXY COATED - (REVISED: 7-12-19)	2,954.00	LB
1030	08301	REMOVE SUPERSTRUCTURE	1.00	LS
1035	08625	PRECAST PC BOX BEAM CB33-36	96.00	LF
1040	08665	PRECAST PC BOX BEAM CB33-48	191.00	LF
1045	08801	GUARDRAIL-STEEL W BEAM-S FACE BR	96.00	LF
1050	21415ND	EROSION CONTROL	1.00	LS
1055	24827EC	REPOINTING	450.00	LF
1060	24845EC	UTILITY COORDINATION	1.00	LS
1065	24982EC	CONCRETE COATING - Approx. 700 SF	1.00	LS
1070	02568	MOBILIZATION	1.00	LS
1075	02569	DEMOBILIZATION	1.00	LS

# MATERIAL SUMMARY

**CONTRACT ID: 195121**

**121GR19D121 - STP BRZ**

**BR06712251900**

GEORGE BRANCH RD (CR 1225) ADDRESS DEFICIENCIES OF CR-1225 BRIDGE OVER COWAN CREEK (067C00020N), FROM MP .02 TO MP .05. BRIDGE REPLACEMENT, A DISTANCE OF .03 MILES.

Project Line No	Bid Code	DESCRIPTION	Quantity	Unit
0795	01987	DELINEATOR FOR GUARDRAIL BI DIRECTIONAL WHITE	10.00	EACH
0800	02223	GRANULAR EMBANKMENT	95.00	CUYD
0805	02351	GUARDRAIL-STEEL W BEAM-S FACE	162.50	LF
0810	02355	GUARDRAIL-STEEL W BEAM-S FACE A	100.00	LF
0815	02360	GUARDRAIL TERMINAL SECTION NO 1	1.00	EACH
0820	02371	GUARDRAIL END TREATMENT TYPE 7	1.00	EACH
0825	02399	EXTRA LENGTH GUARDRAIL POST	32.00	EACH
0830	02545	CLEARING AND GRUBBING - Less than 1 Acre	1.00	LS
0835	02650	MAINTAIN & CONTROL TRAFFIC	1.00	LS
0840	02671	PORTABLE CHANGEABLE MESSAGE SIGN	2.00	EACH
0845	02726	STAKING	1.00	LS
0850	02731	REMOVE STRUCTURE	1.00	LS
0855	03299	ARMORED EDGE FOR CONCRETE	48.00	LF
0860	03304	BRIDGE OVERLAY APPROACH PAVEMENT	348.00	SQYD
0865	08003	FOUNDATION PREPARATION	1.00	LS
0870	08019	CYCLOPEAN STONE RIP RAP	392.00	TON
0875	08033	TEST PILES	70.00	LF
0880	08039	PRE-DRILLING FOR PILES	272.00	LF
0885	08046	PILES-STEEL HP12X53	287.00	LF
0890	08094	PILE POINTS-12 IN	12.00	EACH
0895	08100	CONCRETE-CLASS A	78.60	CUYD
0900	08104	CONCRETE-CLASS AA - (REVISED: 7-12-19)	16.50	CUYD
0905	08151	STEEL REINFORCEMENT-EPOXY COATED	7,400.00	LB
0910	08662	PRECAST PC BOX BEAM CB17-48	267.00	LF
0915	08801	GUARDRAIL-STEEL W BEAM-S FACE BR	75.00	LF
0920	20194ED	REMOVE & RESET TRAFFIC SIGN	1.00	EACH
0925	21373ND	REMOVE SIGN	1.00	EACH
0930	21415ND	EROSION CONTROL	1.00	LS
0935	24982EC	CONCRETE COATING - Approx. 1290 SF.	1.00	LS
0940	02568	MOBILIZATION	1.00	LS
0945	02569	DEMOBILIZATION	1.00	LS
0950	23378EC	CONCRETE SEALING	1,068.00	SQFT

# MATERIAL SUMMARY

**CONTRACT ID: 195121**

**121GR19D121 - STP BRZ**

**BR07710321900**

KY-1032 ADDRESS DEFICIENCIES OF KY-1032 BRIDGE OVER STATE ROAD FORK (077C00036N), FROM MP .022 TO MP .026. BRIDGE REPAIRS, A DISTANCE OF .01 MILES.

Project Line No	Bid Code	DESCRIPTION	Quantity	Unit
0675	01987	DELINEATOR FOR GUARDRAIL BI DIRECTIONAL WHITE	4.00	EACH
0680	02360	GUARDRAIL TERMINAL SECTION NO 1	4.00	EACH
0685	02650	MAINTAIN & CONTROL TRAFFIC	1.00	LS
0690	02671	PORTABLE CHANGEABLE MESSAGE SIGN	2.00	EACH
0695	03299	ARMORED EDGE FOR CONCRETE	28.00	LF
0700	03304	BRIDGE OVERLAY APPROACH PAVEMENT	78.00	SQYD
0705	08003	FOUNDATION PREPARATION	1.00	LS
0710	08019	CYCLOPEAN STONE RIP RAP	25.00	TON
0715	08100	CONCRETE-CLASS A	1.00	CUYD
0720	08104	CONCRETE-CLASS AA	10.00	CUYD
0725	08151	STEEL REINFORCEMENT-EPOXY COATED	2,046.00	LB
0730	08160	STRUCTURAL STEEL - Approx. 8,587 lbs	1.00	LS
0735	08170	SHEAR CONNECTORS	1.00	LS
0740	08301	REMOVE SUPERSTRUCTURE	1.00	LS
0745	08801	GUARDRAIL-STEEL W BEAM-S FACE BR	54.00	LF
0750	25045ED	ABC CONSTRUCTION COST - Bridge - 077C00036N	1.00	L S
0755	21415ND	EROSION CONTROL	1.00	LS
0760	22146EN	CONCRETE PATCHING REPAIR	4.00	SQFT
0765	23378EC	CONCRETE SEALING	330.00	SQFT
0770	24940ED	EMERGENCY CLOSURE PLAN - Emergency Access as per Proposal	1.00	EACH
0775	24982EC	CONCRETE COATING - 465 SF	1.00	LS
0780	24992ED	STEEL GRID DECK	335.00	SQFT
0785	02568	MOBILIZATION	1.00	LS
0790	02569	DEMOBILIZATION	1.00	LS



# MATERIAL SUMMARY

**CONTRACT ID: 195121**

**121GR19D121 - STP BRZ**

**BR09815171900**

PIGEON ROOST ROAD ADDRESS DEFICIENCIES OF PIGEON ROOST RD BRIDGE OVER BIG CREEK (098C00005N), FROM MP .083 TO MP .089. BRIDGE REPLACEMENT, A DISTANCE OF .01 MILES.

Project Line No	Bid Code	DESCRIPTION	Quantity	Unit
0180	01987	DELINEATOR FOR GUARDRAIL BI DIRECTIONAL WHITE	8.00	EACH
0185	02223	GRANULAR EMBANKMENT	28.00	CUYD
0190	02351	GUARDRAIL-STEEL W BEAM-S FACE	25.00	LF
0195	02355	GUARDRAIL-STEEL W BEAM-S FACE A	100.00	LF
0200	02360	GUARDRAIL TERMINAL SECTION NO 1	2.00	EACH
0205	02371	GUARDRAIL END TREATMENT TYPE 7	2.00	EACH
0210	02399	EXTRA LENGTH GUARDRAIL POST	32.00	EACH
0215	02545	CLEARING AND GRUBBING - Less than 1 Acre	1.00	LS
0220	02650	MAINTAIN & CONTROL TRAFFIC	1.00	LS
0225	02651	DIVERSIONS (BY-PASS DETOURS)	1.00	LS
0230	02671	PORTABLE CHANGEABLE MESSAGE SIGN	2.00	EACH
0235	02726	STAKING	1.00	LS
0240	02731	REMOVE STRUCTURE	1.00	LS
0245	03299	ARMORED EDGE FOR CONCRETE	32.00	LF
0250	03304	BRIDGE OVERLAY APPROACH PAVEMENT	190.00	SQYD
0255	08002	STRUCTURE EXCAV-SOLID ROCK	45.00	CUYD
0260	08003	FOUNDATION PREPARATION	1.00	LS
0265	08019	CYCLOPEAN STONE RIP RAP	125.00	TON
0270	08100	CONCRETE-CLASS A	99.50	CUYD
0275	08104	CONCRETE-CLASS AA	12.50	CUYD
0280	08150	STEEL REINFORCEMENT	10,500.00	LB
0285	08151	STEEL REINFORCEMENT-EPOXY COATED	1,500.00	LB
0290	08661	PRECAST PC BOX BEAM CB12-48	128.00	LF
0295	08801	GUARDRAIL-STEEL W BEAM-S FACE BR	56.00	LF
0300	21415ND	EROSION CONTROL	1.00	LS
0305	23378EC	CONCRETE SEALING	525.00	SQFT
0310	24982EC	CONCRETE COATING - Approx. 1300 SF	1.00	LS
0315	02568	MOBILIZATION	1.00	LS
0320	02569	DEMOBILIZATION	1.00	LS

# MATERIAL SUMMARY

**CONTRACT ID: 195121**

**121GR19D121 - STP BRZ**

**BR09819111902**

CANEY HWY #1 (CR 1911) ADDRESS DEFICIENCIES OF CANEY HWY#1 BRIDGE OVER CANEY CREEK  
(098C00113N) BRIDGE REPAIRS, A DISTANCE OF .02 MILES.

Project Line No	Bid Code	DESCRIPTION	Quantity	Unit
1230	01987	DELINEATOR FOR GUARDRAIL BI DIRECTIONAL WHITE	4.00	EACH
1235	02223	GRANULAR EMBANKMENT	28.00	CUYD
1240	02351	GUARDRAIL-STEEL W BEAM-S FACE	125.00	LF
1245	02360	GUARDRAIL TERMINAL SECTION NO 1	2.00	EACH
1250	02371	GUARDRAIL END TREATMENT TYPE 7	2.00	EACH
1255	02381	REMOVE GUARDRAIL	152.00	LF
1260	02399	EXTRA LENGTH GUARDRAIL POST	32.00	EACH
1265	02555	CONCRETE-CLASS B	3.00	CUYD
1270	02650	MAINTAIN & CONTROL TRAFFIC	1.00	LS
1275	02671	PORTABLE CHANGEABLE MESSAGE SIGN	2.00	EACH
1280	03304	BRIDGE OVERLAY APPROACH PAVEMENT	164.00	SQYD
1285	08100	CONCRETE-CLASS A	32.00	CUYD
1290	08104	CONCRETE-CLASS AA	54.00	CUYD
1295	08150	STEEL REINFORCEMENT	5,410.00	LB
1300	08151	STEEL REINFORCEMENT-EPOXY COATED	17,390.00	LB
1305	08160	STRUCTURAL STEEL - Approx. 42386 lbs	1.00	LS
1310	08301	REMOVE SUPERSTRUCTURE	1.00	LS
1315	21415ND	EROSION CONTROL	1.00	LS
1320	23380EC	BEARING PADS	12.00	EACH
1325	24827EC	REPOINTING	200.00	LF
1330	24982EC	CONCRETE COATING - Approx. 2003 SF	1.00	LS
1335	25017ED	RAIL SYSTEM SIDE MOUNTED MGS	157.00	LF
1340	02568	MOBILIZATION	1.00	LS
1345	02569	DEMOBILIZATION	1.00	LS
1350	08003	FOUNDATION PREPARATION	1.00	LS
1355	03299	ARMORED EDGE FOR CONCRETE - (ADDED: 7-23-19)	60.00	LF
1360	08170	SHEAR CONNECTORS - APPROX. 1,556 LBS (ADDED: 7-23-19)	1.00	LS

# MATERIAL SUMMARY

**CONTRACT ID: 195121**

**121GR19D121 - STP BRZ**

**BR09933541900**

KY-3354 ADDRESS DEFICIENCIES OF KY 3354 BRIDGE OVER CAT CREEK (099B00081N), FROM MP 4.095 TO MP 4.103. BRIDGE REPLACEMENT, A DISTANCE OF .01 MILES.

Project Line No	Bid Code	DESCRIPTION	Quantity	Unit
0525	01987	DELINEATOR FOR GUARDRAIL BI DIRECTIONAL WHITE	12.00	EACH
0530	02223	GRANULAR EMBANKMENT	28.00	CUYD
0535	02351	GUARDRAIL-STEEL W BEAM-S FACE	200.00	LF
0540	02360	GUARDRAIL TERMINAL SECTION NO 1	3.00	EACH
0545	02371	GUARDRAIL END TREATMENT TYPE 7	1.00	EACH
0550	02381	REMOVE GUARDRAIL	75.00	LF
0555	02399	EXTRA LENGTH GUARDRAIL POST	28.00	EACH
0560	02545	CLEARING AND GRUBBING - Less than 1 acre	1.00	LS
0565	02650	MAINTAIN & CONTROL TRAFFIC	1.00	LS
0570	02671	PORTABLE CHANGEABLE MESSAGE SIGN	2.00	EACH
0575	02726	STAKING	1.00	LS
0580	02731	REMOVE STRUCTURE	1.00	LS
0585	03299	ARMORED EDGE FOR CONCRETE	49.70	LF
0590	03304	BRIDGE OVERLAY APPROACH PAVEMENT	224.00	SQYD
0595	08003	FOUNDATION PREPARATION	1.00	LS
0600	08019	CYCLOPEAN STONE RIP RAP	213.00	TON
0605	08033	TEST PILES	30.00	LF
0610	08039	PRE-DRILLING FOR PILES	80.00	LF
0615	08046	PILES-STEEL HP12X53	84.00	LF
0620	08094	PILE POINTS-12 IN	8.00	EACH
0625	08100	CONCRETE-CLASS A	43.80	CUYD
0630	08104	CONCRETE-CLASS AA - (REVISED: 7-12-19)	35.50	CUYD
0635	08151	STEEL REINFORCEMENT-EPOXY COATED	8,480.00	LB
0640	08664	PRECAST PC BOX BEAM CB27-48	420.00	LF
0645	21415ND	EROSION CONTROL	1.00	LS
0650	23378EC	CONCRETE SEALING	1,680.00	SQFT
0655	24982EC	CONCRETE COATING - Aprox. 1391 SF	1.00	LS
0660	25017ED	RAIL SYSTEM SIDE MOUNTED MGS	140.00	LF
0665	02568	MOBILIZATION	1.00	LS
0670	02569	DEMOBILIZATION	1.00	LS

**PROPOSAL BID ITEMS**

195121

Page 1 of 7

Report Date 7/23/19

**Section: 0001 - BRIDGE - 098C00113N**

LINE	BID CODE	ALT	DESCRIPTION	QUANTITY	UNIT	UNIT PRIC	FP	AMOUNT
0010	01987		DELINEATOR FOR GUARDRAIL BI DIRECTIONAL WHITE	4.00	EACH		\$	
0020	02223		GRANULAR EMBANKMENT	28.00	CUYD		\$	
0030	02351		GUARDRAIL-STEEL W BEAM-S FACE	125.00	LF		\$	
0040	02360		GUARDRAIL TERMINAL SECTION NO 1	2.00	EACH		\$	
0050	02371		GUARDRAIL END TREATMENT TYPE 7	2.00	EACH		\$	
0060	02381		REMOVE GUARDRAIL	152.00	LF		\$	
0070	02399		EXTRA LENGTH GUARDRAIL POST	32.00	EACH		\$	
0080	02555		CONCRETE-CLASS B	3.00	CUYD		\$	
0090	02650		MAINTAIN & CONTROL TRAFFIC	1.00	LS		\$	
0100	02671		PORTABLE CHANGEABLE MESSAGE SIGN	2.00	EACH		\$	
0105	03299		ARMORED EDGE FOR CONCRETE (ADDED: 7-23-19)	60.00	LF		\$	
0110	03304		BRIDGE OVERLAY APPROACH PAVEMENT	164.00	SQYD		\$	
0120	08003		FOUNDATION PREPARATION	1.00	LS		\$	
0130	08100		CONCRETE-CLASS A	32.00	CUYD		\$	
0140	08104		CONCRETE-CLASS AA	54.00	CUYD		\$	
0150	08150		STEEL REINFORCEMENT	5,410.00	LB		\$	
0160	08151		STEEL REINFORCEMENT-EPOXY COATED	17,390.00	LB		\$	
0170	08160		STRUCTURAL STEEL Approx. 42386 lbs	1.00	LS		\$	
0175	08170		SHEAR CONNECTORS APPROX. 1,556 LBS (ADDED: 7-23-19)	1.00	LS		\$	
0180	08301		REMOVE SUPERSTRUCTURE	1.00	LS		\$	
0190	21415ND		EROSION CONTROL	1.00	LS		\$	
0200	23380EC		BEARING PADS	12.00	EACH		\$	
0210	24827EC		REPOINTING	200.00	LF		\$	
0220	24982EC		CONCRETE COATING Approx. 2003 SF	1.00	LS		\$	
0230	25017ED		RAIL SYSTEM SIDE MOUNTED MGS	157.00	LF		\$	

**Section: 0002 - BRIDGE - 013B00007N**

LINE	BID CODE	ALT	DESCRIPTION	QUANTITY	UNIT	UNIT PRIC	FP	AMOUNT
0240	01987		DELINEATOR FOR GUARDRAIL BI DIRECTIONAL WHITE	8.00	EACH		\$	
0250	02223		GRANULAR EMBANKMENT	28.00	CUYD		\$	
0260	02351		GUARDRAIL-STEEL W BEAM-S FACE	100.00	LF		\$	
0270	02360		GUARDRAIL TERMINAL SECTION NO 1	1.00	EACH		\$	
0280	02371		GUARDRAIL END TREATMENT TYPE 7	3.00	EACH		\$	
0290	02399		EXTRA LENGTH GUARDRAIL POST	28.00	EACH		\$	
0300	02545		CLEARING AND GRUBBING Less than 1 acre	1.00	LS		\$	
0310	02650		MAINTAIN & CONTROL TRAFFIC	1.00	LS		\$	
0320	02671		PORTABLE CHANGEABLE MESSAGE SIGN	2.00	EACH		\$	
0330	02726		STAKING	1.00	LS		\$	
0340	02731		REMOVE STRUCTURE	1.00	LS		\$	

**PROPOSAL BID ITEMS**

195121

Page 2 of 7

Report Date 7/23/19

LINE	BID CODE	ALT	DESCRIPTION	QUANTITY	UNIT	UNIT PRIC	FP	AMOUNT
0350	03299		ARMORED EDGE FOR CONCRETE	55.40	LF		\$	
0360	03304		BRIDGE OVERLAY APPROACH PAVEMENT	173.00	SQYD		\$	
0370	08002		STRUCTURE EXCAV-SOLID ROCK	33.00	CUYD		\$	
0380	08003		FOUNDATION PREPARATION	1.00	LS		\$	
0390	08019		CYCLOPEAN STONE RIP RAP	136.00	TON		\$	
0400	08033		TEST PILES	43.00	LF		\$	
0410	08039		PRE-DRILLING FOR PILES	150.00	LF		\$	
0420	08046		PILES-STEEL HP12X53	279.50	LF		\$	
0430	08094		PILE POINTS-12 IN	15.00	EACH		\$	
0440	08100		CONCRETE-CLASS A	177.40	CUYD		\$	
0450	08104		CONCRETE-CLASS AA	12.70	CUYD		\$	
0460	08151		STEEL REINFORCEMENT-EPOXY COATED	13,475.00	LB		\$	
0470	08661		PRECAST PC BOX BEAM CB12-48	201.00	LF		\$	
0490	21415ND		EROSION CONTROL	1.00	LS		\$	
0500	23378EC		CONCRETE SEALING	804.00	SQFT		\$	
0510	24982EC		CONCRETE COATING Approx. 1489 SF	1.00	LS		\$	
0515	25017ED		RAIL SYSTEM SIDE MOUNTED MGS (ADDED: 7-23-19)	61.00	LF		\$	

**Section: 0003 - BRIDGE - 060C00029N**

LINE	BID CODE	ALT	DESCRIPTION	QUANTITY	UNIT	UNIT PRIC	FP	AMOUNT
0520	00001		DGA BASE	249.00	TON		\$	
0530	00212		CL2 ASPH BASE 1.00D PG64-22	133.00	TON		\$	
0540	00301		CL2 ASPH SURF 0.38D PG64-22	22.00	TON		\$	
0550	01987		DELINEATOR FOR GUARDRAIL BI DIRECTIONAL WHITE	10.00	EACH		\$	
0560	02268		REMOVE & REPLACE FENCE	40.00	LF		\$	
0570	02351		GUARDRAIL-STEEL W BEAM-S FACE	100.00	LF		\$	
0580	02355		GUARDRAIL-STEEL W BEAM-S FACE A	100.00	LF		\$	
0590	02360		GUARDRAIL TERMINAL SECTION NO 1	2.00	EACH		\$	
0600	02367		GUARDRAIL END TREATMENT TYPE 1	1.00	EACH		\$	
0610	02371		GUARDRAIL END TREATMENT TYPE 7	1.00	EACH		\$	
0620	02399		EXTRA LENGTH GUARDRAIL POST	28.00	EACH		\$	
0630	02545		CLEARING AND GRUBBING Less than 1 Acre	1.00	LS		\$	
0640	02650		MAINTAIN & CONTROL TRAFFIC	1.00	LS		\$	
0650	02671		PORTABLE CHANGEABLE MESSAGE SIGN	2.00	EACH		\$	
0660	02678		SCARIFYING PAVEMENT	122.00	SQYD		\$	
0670	02726		STAKING	1.00	LS		\$	
0680	02731		REMOVE STRUCTURE	1.00	LS		\$	
0690	03299		ARMORED EDGE FOR CONCRETE 1 - PRECAST CONCRETE SPAN	34.00	LF		\$	
0700	06514		PAVE STRIPING-PERM PAINT-4 IN	150.00	LF		\$	
0710	08003		FOUNDATION PREPARATION	1.00	LS		\$	
0720	08019		CYCLOPEAN STONE RIP RAP	90.00	TON		\$	
0730	08033		TEST PILES	60.00	LF		\$	
0740	08046		PILES-STEEL HP12X53	300.00	LF		\$	
0750	08094		PILE POINTS-12 IN	14.00	EACH		\$	

**PROPOSAL BID ITEMS**

195121

Page 3 of 7

Report Date 7/23/19

LINE	BID CODE	ALT	DESCRIPTION	QUANTITY	UNIT	UNIT PRIC	FP	AMOUNT
0760	08100		CONCRETE-CLASS A	110.00	CUYD		\$	
0770	08104		CONCRETE-CLASS AA	16.00	CUYD		\$	
0780	08150		STEEL REINFORCEMENT	6,500.00	LB		\$	
0790	08151		STEEL REINFORCEMENT-EPOXY COATED (REVISED: 7-12-19)	1,706.00	LB		\$	
0800	08661		PRECAST PC BOX BEAM CB12-48	136.00	LF		\$	
0810	08801		GUARDRAIL-STEEL W BEAM-S FACE BR	58.00	LF		\$	
0820	21415ND		EROSION CONTROL	1.00	LS		\$	
0830	23378EC		CONCRETE SEALING	550.00	SQFT		\$	
0840	24982EC		CONCRETE COATING Approx 1400 SF.	1.00	LS		\$	

**Section: 0004 - BRIDGE - 067B00078N**

LINE	BID CODE	ALT	DESCRIPTION	QUANTITY	UNIT	UNIT PRIC	FP	AMOUNT
0850	01691		FLUME INLET TYPE 2	1.00	EACH		\$	
0860	01811		STANDARD CURB AND GUTTER MOD	69.00	LF		\$	
0870	01891		ISLAND HEADER CURB TYPE 2	50.00	LF		\$	
0880	01987		DELINEATOR FOR GUARDRAIL BI DIRECTIONAL WHITE	10.00	EACH		\$	
0890	02223		GRANULAR EMBANKMENT	70.00	CUYD		\$	
0900	02351		GUARDRAIL-STEEL W BEAM-S FACE	162.50	LF		\$	
0910	02360		GUARDRAIL TERMINAL SECTION NO 1	2.00	EACH		\$	
0920	02363		GUARDRAIL CONNECTOR TO BRIDGE END TY A	2.00	EACH		\$	
0930	02371		GUARDRAIL END TREATMENT TYPE 7	1.00	EACH		\$	
0940	02378		GUARDRAIL CONNECTOR TO BRIDGE END TY D	2.00	EACH		\$	
0950	02391		GUARDRAIL END TREATMENT TYPE 4A	1.00	EACH		\$	
0960	02399		EXTRA LENGTH GUARDRAIL POST	32.00	EACH		\$	
0970	02545		CLEARING AND GRUBBING Less than 1 acre	1.00	LS		\$	
0980	02619		HANDRAIL-TYPE A	44.00	LF		\$	
0990	02650		MAINTAIN & CONTROL TRAFFIC	1.00	LS		\$	
1000	02671		PORTABLE CHANGEABLE MESSAGE SIGN	4.00	EACH		\$	
1010	02720		SIDEWALK-4 IN CONCRETE	26.00	SQYD		\$	
1020	02726		STAKING	1.00	LS		\$	
1030	02731		REMOVE STRUCTURE	1.00	LS		\$	
1040	03299		ARMORED EDGE FOR CONCRETE	92.00	LF		\$	
1050	03304		BRIDGE OVERLAY APPROACH PAVEMENT	740.00	SQYD		\$	
1060	08003		FOUNDATION PREPARATION	1.00	LS		\$	
1070	08019		CYCLOPEAN STONE RIP RAP	320.00	TON		\$	
1080	08033		TEST PILES	50.00	LF		\$	
1090	08046		PILES-STEEL HP12X53	312.00	LF		\$	
1100	08094		PILE POINTS-12 IN	17.00	EACH		\$	
1110	08100		CONCRETE-CLASS A	50.00	CUYD		\$	
1120	08104		CONCRETE-CLASS AA	102.00	CUYD		\$	
1130	08140		MECHANICAL REINF COUPLER #5 EPOXY COATED	140.00	EACH		\$	
1140	08151		STEEL REINFORCEMENT-EPOXY COATED	37,500.00	LB		\$	

**PROPOSAL BID ITEMS**

195121

Page 4 of 7

Report Date 7/23/19

LINE	BID CODE	ALT	DESCRIPTION	QUANTITY	UNIT	UNIT PRIC	FP	AMOUNT
1150	21415ND		EROSION CONTROL	1.00	LS		\$	
1160	21532ED		RAIL SYSTEM TYPE III	40.00	LF		\$	
1170	23158ES505		DETECTABLE WARNINGS	8.00	SQFT		\$	
1180	23378EC		CONCRETE SEALING	1,265.00	SQFT		\$	
1190	23813EC		DECK DRAIN	2.00	EACH		\$	
1200	24405EC		MECHANICAL REINF COUPLER-#8 EPOXY COATED	20.00	EACH		\$	
1210	24684EN		RAIL SYSTEM TYPE 4	44.00	LF		\$	
1220	24982EC		CONCRETE COATING Approx 2650 SF	1.00	LS		\$	

**Section: 0005 - BRIDGE - 067B00022N**

LINE	BID CODE	ALT	DESCRIPTION	QUANTITY	UNIT	UNIT PRIC	FP	AMOUNT
1230	00001		DGA BASE	145.00	TON		\$	
1240	00212		CL2 ASPH BASE 1.00D PG64-22	94.00	TON		\$	
1250	02223		GRANULAR EMBANKMENT	28.00	CUYD		\$	
1260	02355		GUARDRAIL-STEEL W BEAM-S FACE A	131.25	LF		\$	
1270	02360		GUARDRAIL TERMINAL SECTION NO 1	4.00	EACH		\$	
1280	02399		EXTRA LENGTH GUARDRAIL POST	21.00	EACH		\$	
1290	02650		MAINTAIN & CONTROL TRAFFIC	1.00	LS		\$	
1300	02651		DIVERSIONS (BY-PASS DETOURS)	1.00	LS		\$	
1310	03299		ARMORED EDGE FOR CONCRETE	63.00	LF		\$	
1320	03304		BRIDGE OVERLAY APPROACH PAVEMENT	125.00	SQYD		\$	
1330	08003		FOUNDATION PREPARATION	1.00	LS		\$	
1340	08100		CONCRETE-CLASS A	7.50	CUYD		\$	
1350	08104		CONCRETE-CLASS AA	16.50	CUYD		\$	
1360	08150		STEEL REINFORCEMENT (REVISED: 7-12-19)	1,548.00	LB		\$	
1370	08151		STEEL REINFORCEMENT-EPOXY COATED (REVISED: 7-12-19)	2,954.00	LB		\$	
1380	08301		REMOVE SUPERSTRUCTURE	1.00	LS		\$	
1390	08625		PRECAST PC BOX BEAM CB33-36	96.00	LF		\$	
1400	08665		PRECAST PC BOX BEAM CB33-48	191.00	LF		\$	
1410	08801		GUARDRAIL-STEEL W BEAM-S FACE BR	96.00	LF		\$	
1420	21415ND		EROSION CONTROL	1.00	LS		\$	
1430	24827EC		REPOINTING	450.00	LF		\$	
1440	24845EC		UTILITY COORDINATION	1.00	LS		\$	
1450	24982EC		CONCRETE COATING Approx. 700 SF	1.00	LS		\$	

**Section: 0006 - BRIDGE - 067C00020N**

LINE	BID CODE	ALT	DESCRIPTION	QUANTITY	UNIT	UNIT PRIC	FP	AMOUNT
1460	01987		DELINEATOR FOR GUARDRAIL BI DIRECTIONAL WHITE	10.00	EACH		\$	
1470	02223		GRANULAR EMBANKMENT	95.00	CUYD		\$	
1480	02351		GUARDRAIL-STEEL W BEAM-S FACE	162.50	LF		\$	
1490	02355		GUARDRAIL-STEEL W BEAM-S FACE A	100.00	LF		\$	

**PROPOSAL BID ITEMS**

195121

Page 5 of 7

Report Date 7/23/19

LINE	BID CODE	ALT	DESCRIPTION	QUANTITY	UNIT	UNIT PRIC	FP	AMOUNT
1500	02360		GUARDRAIL TERMINAL SECTION NO 1	1.00	EACH		\$	
1510	02371		GUARDRAIL END TREATMENT TYPE 7	1.00	EACH		\$	
1520	02399		EXTRA LENGTH GUARDRAIL POST	32.00	EACH		\$	
1530	02545		CLEARING AND GRUBBING Less than 1 Acre	1.00	LS		\$	
1540	02650		MAINTAIN & CONTROL TRAFFIC	1.00	LS		\$	
1550	02671		PORTABLE CHANGEABLE MESSAGE SIGN	2.00	EACH		\$	
1560	02726		STAKING	1.00	LS		\$	
1570	02731		REMOVE STRUCTURE	1.00	LS		\$	
1580	03299		ARMORED EDGE FOR CONCRETE	48.00	LF		\$	
1590	03304		BRIDGE OVERLAY APPROACH PAVEMENT	348.00	SQYD		\$	
1600	08003		FOUNDATION PREPARATION	1.00	LS		\$	
1610	08019		CYCLOPEAN STONE RIP RAP	392.00	TON		\$	
1620	08033		TEST PILES	70.00	LF		\$	
1630	08039		PRE-DRILLING FOR PILES	272.00	LF		\$	
1640	08046		PILES-STEEL HP12X53	287.00	LF		\$	
1650	08094		PILE POINTS-12 IN	12.00	EACH		\$	
1660	08100		CONCRETE-CLASS A	78.60	CUYD		\$	
1670	08104		CONCRETE-CLASS AA (REVISED: 7-12-19)	16.50	CUYD		\$	
1680	08151		STEEL REINFORCEMENT-EPOXY COATED	7,400.00	LB		\$	
1690	08662		PRECAST PC BOX BEAM CB17-48	267.00	LF		\$	
1700	08801		GUARDRAIL-STEEL W BEAM-S FACE BR	75.00	LF		\$	
1710	20194ED		REMOVE & RESET TRAFFIC SIGN	1.00	EACH		\$	
1720	21373ND		REMOVE SIGN	1.00	EACH		\$	
1730	21415ND		EROSION CONTROL	1.00	LS		\$	
1740	23378EC		CONCRETE SEALING	1,068.00	SQFT		\$	
1750	24982EC		CONCRETE COATING Approx. 1290 SF.	1.00	LS		\$	

**Section: 0007 - BRIDGE - 077C00036N**

LINE	BID CODE	ALT	DESCRIPTION	QUANTITY	UNIT	UNIT PRIC	FP	AMOUNT
1760	01987		DELINEATOR FOR GUARDRAIL BI DIRECTIONAL WHITE	4.00	EACH		\$	
1770	02360		GUARDRAIL TERMINAL SECTION NO 1	4.00	EACH		\$	
1780	02650		MAINTAIN & CONTROL TRAFFIC	1.00	LS		\$	
1790	02671		PORTABLE CHANGEABLE MESSAGE SIGN	2.00	EACH		\$	
1800	03299		ARMORED EDGE FOR CONCRETE	28.00	LF		\$	
1810	03304		BRIDGE OVERLAY APPROACH PAVEMENT	78.00	SQYD		\$	
1820	08003		FOUNDATION PREPARATION	1.00	LS		\$	
1830	08019		CYCLOPEAN STONE RIP RAP	25.00	TON		\$	
1840	08100		CONCRETE-CLASS A	1.00	CUYD		\$	
1850	08104		CONCRETE-CLASS AA	10.00	CUYD		\$	
1860	08151		STEEL REINFORCEMENT-EPOXY COATED	2,046.00	LB		\$	
1870	08160		STRUCTURAL STEEL Approx. 8,587 lbs	1.00	LS		\$	
1880	08170		SHEAR CONNECTORS	1.00	LS		\$	
1890	08301		REMOVE SUPERSTRUCTURE	1.00	LS		\$	
1900	08801		GUARDRAIL-STEEL W BEAM-S FACE BR	54.00	LF		\$	



**PROPOSAL BID ITEMS**

195121

Page 6 of 7

Report Date 7/23/19

LINE	BID CODE	ALT	DESCRIPTION	QUANTITY	UNIT	UNIT PRIC	FP	AMOUNT
1910	21415ND		EROSION CONTROL	1.00	LS		\$	
1920	22146EN		CONCRETE PATCHING REPAIR	4.00	SQFT		\$	
1930	23378EC		CONCRETE SEALING	330.00	SQFT		\$	
1940	24940ED		EMERGENCY CLOSURE PLAN Emergency Access as per Proposal	1.00	EACH		\$	
1950	24982EC		CONCRETE COATING 465 SF	1.00	LS		\$	
1960	24992ED		STEEL GRID DECK	335.00	SQFT		\$	
1970	25045ED		ABC CONSTRUCTION COST Bridge - 077C00036N	1.00	L S		\$	

**Section: 0008 - BRIDGE - 098C00005N**

LINE	BID CODE	ALT	DESCRIPTION	QUANTITY	UNIT	UNIT PRIC	FP	AMOUNT
1980	01987		DELINEATOR FOR GUARDRAIL BI DIRECTIONAL WHITE	8.00	EACH		\$	
1990	02223		GRANULAR EMBANKMENT	28.00	CUYD		\$	
2000	02351		GUARDRAIL-STEEL W BEAM-S FACE	25.00	LF		\$	
2010	02355		GUARDRAIL-STEEL W BEAM-S FACE A	100.00	LF		\$	
2020	02360		GUARDRAIL TERMINAL SECTION NO 1	2.00	EACH		\$	
2030	02371		GUARDRAIL END TREATMENT TYPE 7	2.00	EACH		\$	
2040	02399		EXTRA LENGTH GUARDRAIL POST	32.00	EACH		\$	
2050	02545		CLEARING AND GRUBBING Less than 1 Acre	1.00	LS		\$	
2060	02650		MAINTAIN & CONTROL TRAFFIC	1.00	LS		\$	
2070	02651		DIVERSIONS (BY-PASS DETOURS)	1.00	LS		\$	
2080	02671		PORTABLE CHANGEABLE MESSAGE SIGN	2.00	EACH		\$	
2090	02726		STAKING	1.00	LS		\$	
2100	02731		REMOVE STRUCTURE	1.00	LS		\$	
2110	03299		ARMORED EDGE FOR CONCRETE	32.00	LF		\$	
2120	03304		BRIDGE OVERLAY APPROACH PAVEMENT	190.00	SQYD		\$	
2130	08002		STRUCTURE EXCAV-SOLID ROCK	45.00	CUYD		\$	
2140	08003		FOUNDATION PREPARATION	1.00	LS		\$	
2150	08019		CYCLOPEAN STONE RIP RAP	125.00	TON		\$	
2160	08100		CONCRETE-CLASS A	99.50	CUYD		\$	
2170	08104		CONCRETE-CLASS AA	12.50	CUYD		\$	
2180	08150		STEEL REINFORCEMENT	10,500.00	LB		\$	
2190	08151		STEEL REINFORCEMENT-EPOXY COATED	1,500.00	LB		\$	
2200	08661		PRECAST PC BOX BEAM CB12-48	128.00	LF		\$	
2210	08801		GUARDRAIL-STEEL W BEAM-S FACE BR	56.00	LF		\$	
2220	21415ND		EROSION CONTROL	1.00	LS		\$	
2230	23378EC		CONCRETE SEALING	525.00	SQFT		\$	
2240	24982EC		CONCRETE COATING Approx. 1300 SF	1.00	LS		\$	

**Section: 0009 - BRIDGE - 099B00081N**

LINE	BID CODE	ALT	DESCRIPTION	QUANTITY	UNIT	UNIT PRIC	FP	AMOUNT
------	----------	-----	-------------	----------	------	-----------	----	--------

**PROPOSAL BID ITEMS**

195121

Page 7 of 7

Report Date 7/23/19

LINE	BID CODE	ALT	DESCRIPTION	QUANTITY	UNIT	UNIT PRIC	FP	AMOUNT
2250	01987		DELINEATOR FOR GUARDRAIL BI DIRECTIONAL WHITE	12.00	EACH		\$	
2260	02223		GRANULAR EMBANKMENT	28.00	CUYD		\$	
2270	02351		GUARDRAIL-STEEL W BEAM-S FACE	200.00	LF		\$	
2280	02360		GUARDRAIL TERMINAL SECTION NO 1	3.00	EACH		\$	
2290	02371		GUARDRAIL END TREATMENT TYPE 7	1.00	EACH		\$	
2300	02381		REMOVE GUARDRAIL	75.00	LF		\$	
2310	02399		EXTRA LENGTH GUARDRAIL POST	28.00	EACH		\$	
2320	02545		CLEARING AND GRUBBING Less than 1 acre	1.00	LS		\$	
2330	02650		MAINTAIN & CONTROL TRAFFIC	1.00	LS		\$	
2340	02671		PORTABLE CHANGEABLE MESSAGE SIGN	2.00	EACH		\$	
2350	02726		STAKING	1.00	LS		\$	
2360	02731		REMOVE STRUCTURE	1.00	LS		\$	
2370	03299		ARMORED EDGE FOR CONCRETE	49.70	LF		\$	
2380	03304		BRIDGE OVERLAY APPROACH PAVEMENT	224.00	SQYD		\$	
2390	08003		FOUNDATION PREPARATION	1.00	LS		\$	
2400	08019		CYCLOPEAN STONE RIP RAP	213.00	TON		\$	
2410	08033		TEST PILES	30.00	LF		\$	
2420	08039		PRE-DRILLING FOR PILES	80.00	LF		\$	
2430	08046		PILES-STEEL HP12X53	84.00	LF		\$	
2440	08094		PILE POINTS-12 IN	8.00	EACH		\$	
2450	08100		CONCRETE-CLASS A	43.80	CUYD		\$	
2460	08104		CONCRETE-CLASS AA (REVISED: 7-12-19)	35.50	CUYD		\$	
2470	08151		STEEL REINFORCEMENT-EPOXY COATED	8,480.00	LB		\$	
2480	08664		PRECAST PC BOX BEAM CB27-48	420.00	LF		\$	
2490	21415ND		EROSION CONTROL	1.00	LS		\$	
2500	23378EC		CONCRETE SEALING	1,680.00	SQFT		\$	
2510	24982EC		CONCRETE COATING Aprox. 1391 SF	1.00	LS		\$	
2520	25017ED		RAIL SYSTEM SIDE MOUNTED MGS	140.00	LF		\$	

**Section: 0010 - DEMOBILIZATION &/OR MOBILIZATION**

LINE	BID CODE	ALT	DESCRIPTION	QUANTITY	UNIT	UNIT PRIC	FP	AMOUNT
2530	02568		MOBILIZATION	1.00	LS		\$	
2540	02569		DEMOBILIZATION	1.00	LS		\$	